



## Cattle Inventory

Southern Plains Regional Field Office · Post Office Box 70, Austin, Texas 78767 · 800-626-3142 · [www.nass.usda.gov](http://www.nass.usda.gov)

Cooperating with the Oklahoma Department of Agriculture, Food and Forestry and Texas Department of Agriculture

January 31, 2024

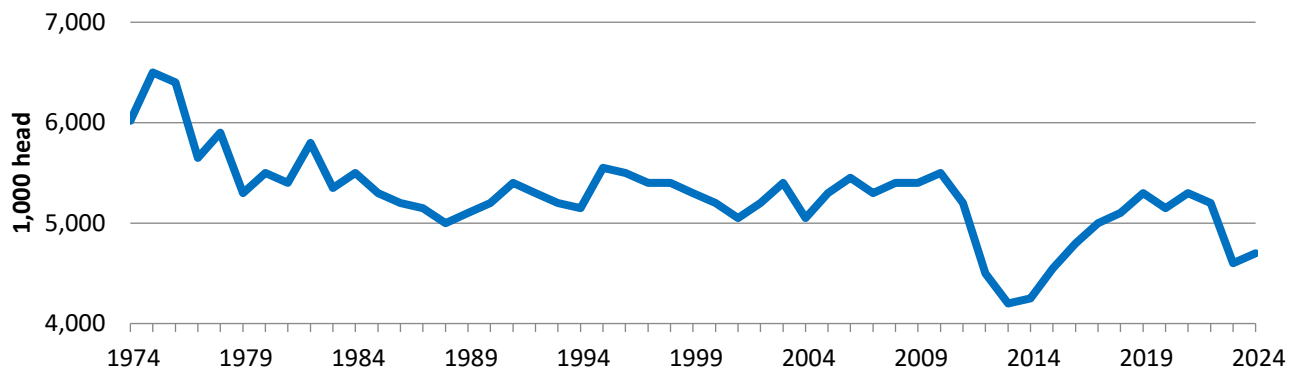
Contact: Jenna Bates or Cameron Willis

Estimates in this report are the result of data collected during the January Cattle Survey from a random sample of producers across the nation. Survey procedures ensured that all cattle producers, regardless of size, had a chance to be included in the survey. Data provided by Oklahoma and Texas producers are the foundation of these estimates made for the Southern Plains Region. We would like to thank all who responded to the survey and made these estimates possible.

Inventory and calf crop estimates were reviewed using official slaughter data, import and export data, and the relationship of the current survey indications to previous surveys. Revisions to previous estimates are made to improve year to year and item to item relationships.

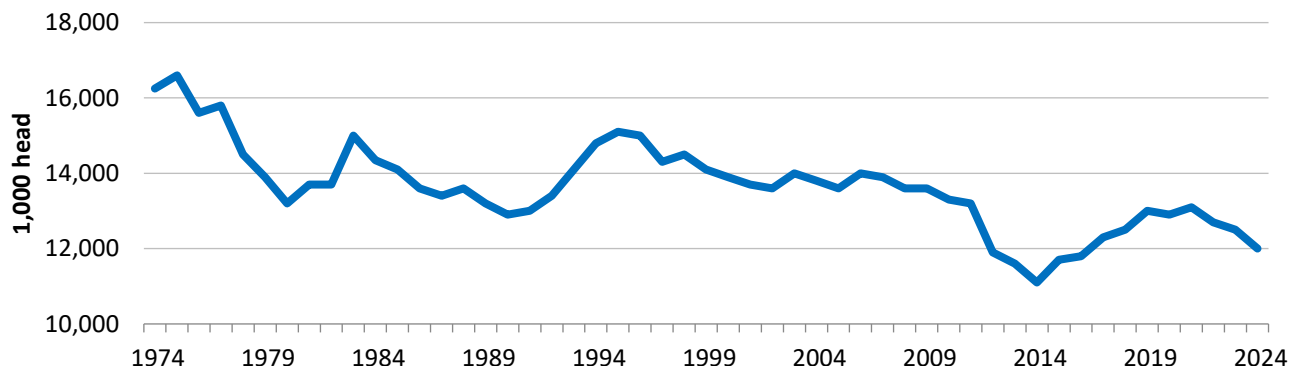
The inventory of Oklahoma cattle and calves totaled 4.70 million head on January 1, 2024, up 2 percent from last year's inventory. Oklahoma makes up 5 percent of the total United States inventory.

Oklahoma All Cattle Inventory

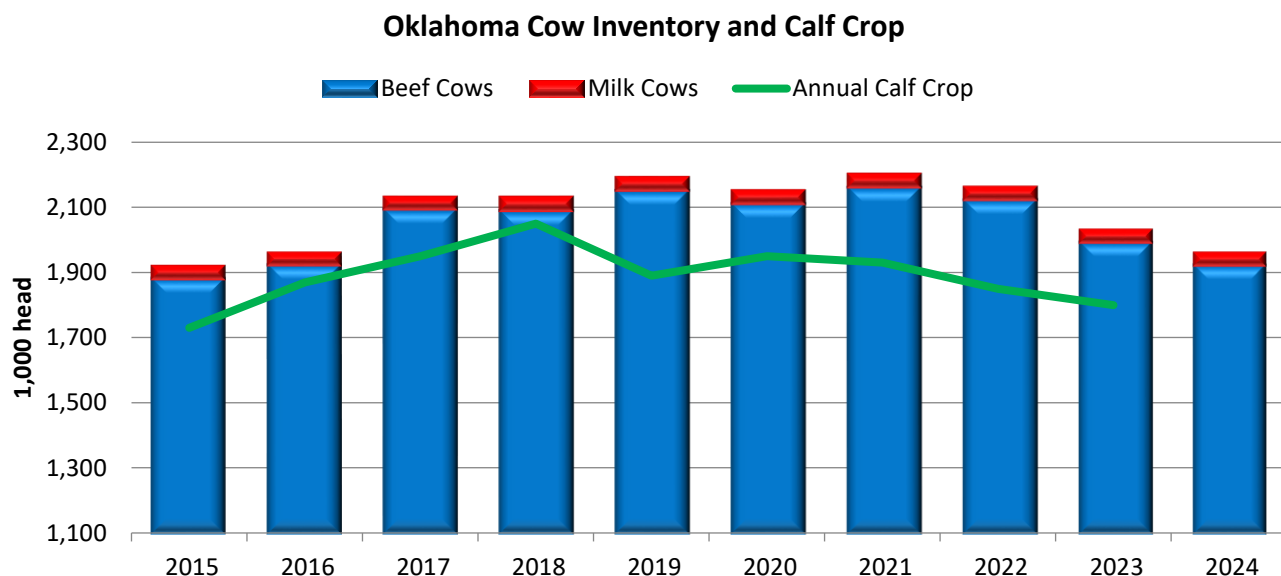


The inventory of Texas cattle and calves totaled 12.0 million head on January 1, 2024, down 4 percent from last year's inventory. Texas continues to rank first in the nation in total number of cattle and calves with 14 percent of the total United States inventory.

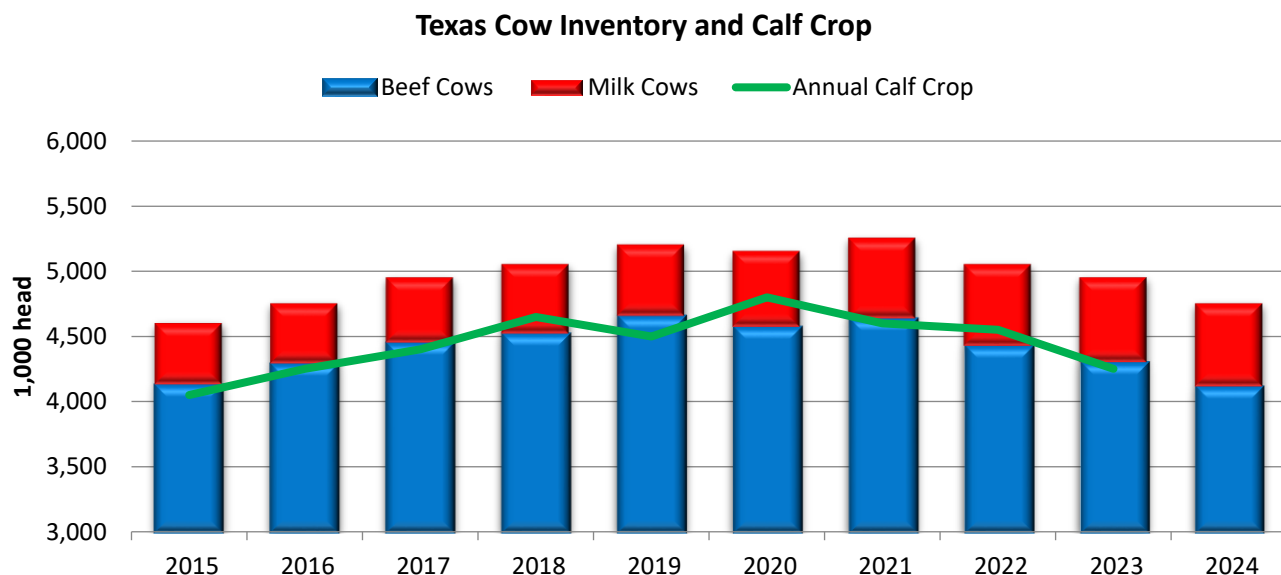
Texas All Cattle Inventory



Total inventory of all cows that have calved in Oklahoma was 1.96 million head, 3 percent below last year's total. Beef cow inventory, at 1.92 million head, was down 3 percent from 2023. Milk cow inventory, at 38.0 thousand head, was down 1 thousand head from the 2023 total of 39.0 thousand head.

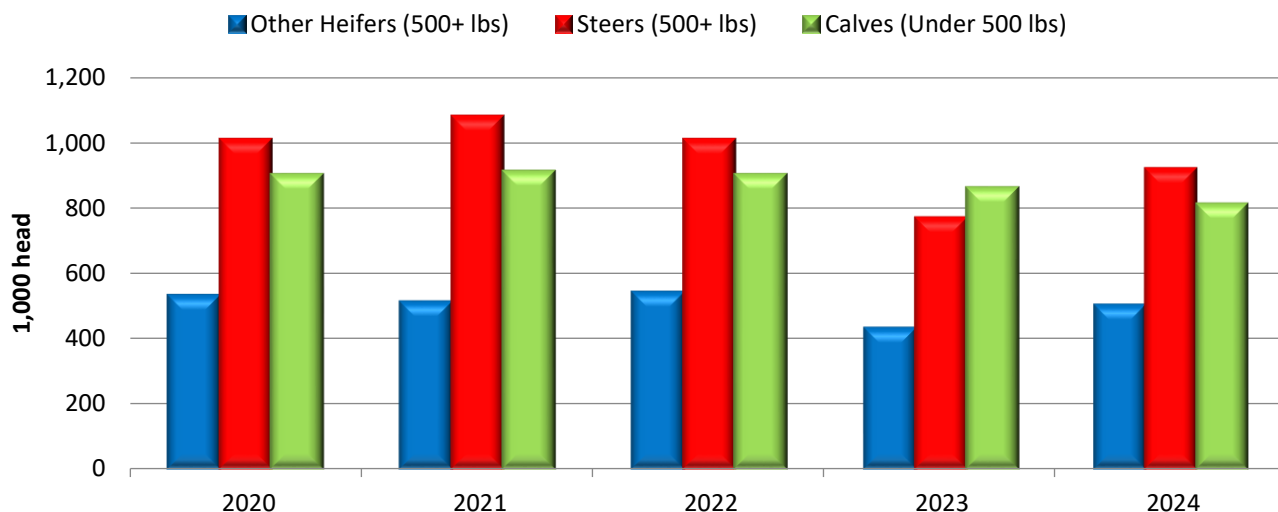


Total inventory of all cows that have calved in Texas was 4.75 million head, 4 percent below last year's total. Beef cow inventory, at 4.12 million head, was down 4 percent from 2023. Milk cow inventory, at 635 thousand head, was down 15 thousand head from the 2023 total of 650 thousand head.



Inventory of all heifers 500 pounds and over in Oklahoma totaled 860 thousand on January 1, 2024, 9 percent above 2023. Beef replacement heifers, at 340 thousand head, is unchanged from 2023. Milk replacement heifers totaled 20.0 thousand head, unchanged from last year.

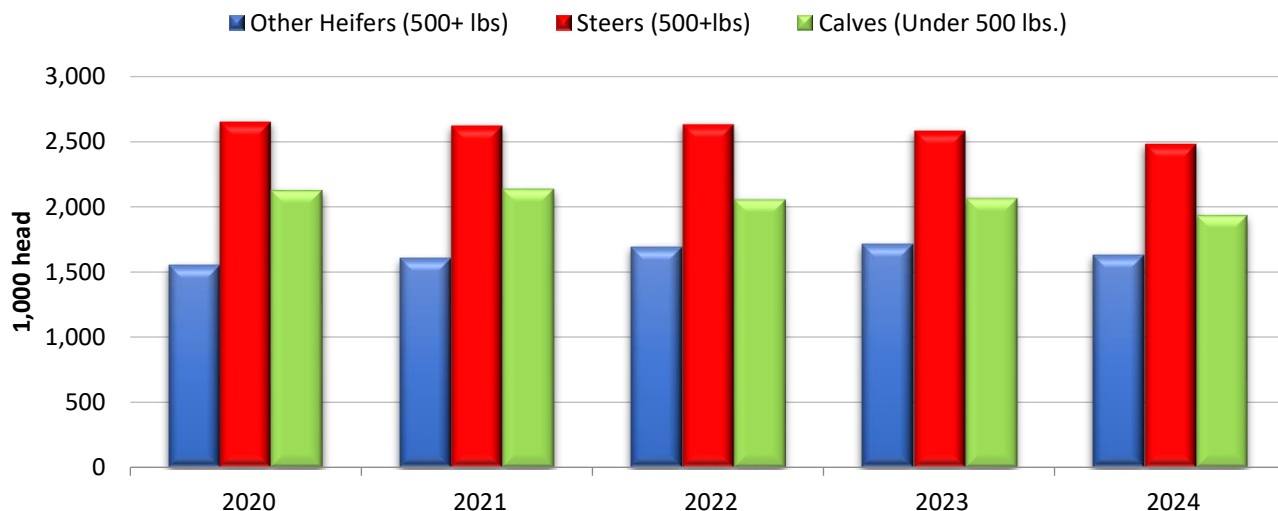
### Oklahoma Feeder Cattle Supply



Oklahoma inventory of steers 500 pounds and over totaled 920 thousand head on January 1, 2024, up 19 percent from last year. Inventory of calves less than 500 pounds, at 810 thousand head, is 6 percent below last year's total. The 2023 calf crop totaled 1.80 million head, 3 percent lower than the 2022 calf crop.

Inventory of all heifers 500 pounds and over in Texas totaled 2.52 million on January 1, 2024, 2 percent below 2023. Beef replacement heifers, at 650 thousand head, is 2 percent higher than 2023. Milk replacement heifers totaled 240 thousand head, up 4 percent from last year.

### Texas Feeder Cattle Supply



Texas inventory of steers 500 pounds and over totaled 2.48 million head on January 1, 2024, down 4 percent from last year. Inventory of calves less than 500 pounds, at 1.93 million head, is 6 percent below last year's total. The 2023 calf crop totaled 4.25 million head, 7 percent lower than the 2022 calf crop.

**January Cattle Inventory and Calf Crop  
Oklahoma, Texas, and United States**

Item	Oklahoma		Texas		United States	
	2023	2024	2023	2024	2023	2024
	<i>1,000 head</i>	<i>1,000 head</i>	<i>1,000 head</i>	<i>1,000 head</i>	<i>1,000 head</i>	<i>1,000 head</i>
All Cattle and Calves.....	4,600	4,700	12,500	12,000	88,841	87,157
Cows & Heifers that have calved.....	2,030	1,960	4,950	4,750	38,337	37,580
Beef Cows.....	1,991	1,922	4,300	4,115	28,939	28,223
Milk Cows.....	39	38	650	635	9,398	9,357
Heifers 500 pounds and over .....						
Beef Replacement.....	340	340	640	650	4,930	4,858
Milk Replacement.....	20	20	230	240	4,074	4,059
Other Heifers.....	430	500	1,710	1,630	9,758	9,566
Steers 500 pounds and over .....	770	920	2,580	2,480	16,057	15,789
Bulls 500 pounds and over.....	150	150	330	320	2,029	2,021
Calves under 500 pounds .....	860	810	2,060	1,930	13,658	13,285
Calf Crop <sup>1</sup> .....	1,850	1,800	4,550	4,250	34,440	33,593

<sup>1</sup> Previous year.

**U.S. Highlights:** The United States inventory of all cattle and calves totaled 87.2 million head on January 1, 2 percent below last year's inventory of 88.8 million head.

All cows and heifers that have calved totaled 37.6 million head, down 2 percent from the 38.3 million on January 1, 2023. Beef cows totaled 28.2 million head, down 2 percent from a year ago, while milk cows were down slightly from a year ago at 9.36 million head. Beef replacement heifers, at 4.86 million head, were down 1 percent from the previous year. Milk replacement heifer numbers were down slightly to 4.06 million head. The 2023 calf crop was estimated at 33.6 million head, down 2 percent from 2022.

*NASS provides accurate, timely, useful and objective statistics in service to U.S. agriculture. In order to view the full national report, please visit the following website: [www.nass.usda.gov/Publications/](http://www.nass.usda.gov/Publications/).*